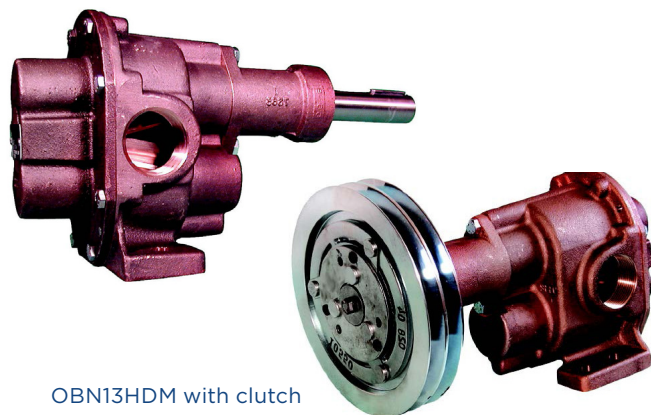




# OBERDORFER®

An Ingersoll Rand Business

## N13HDE Series Bronze Pedestal Rotary Gear Pumps



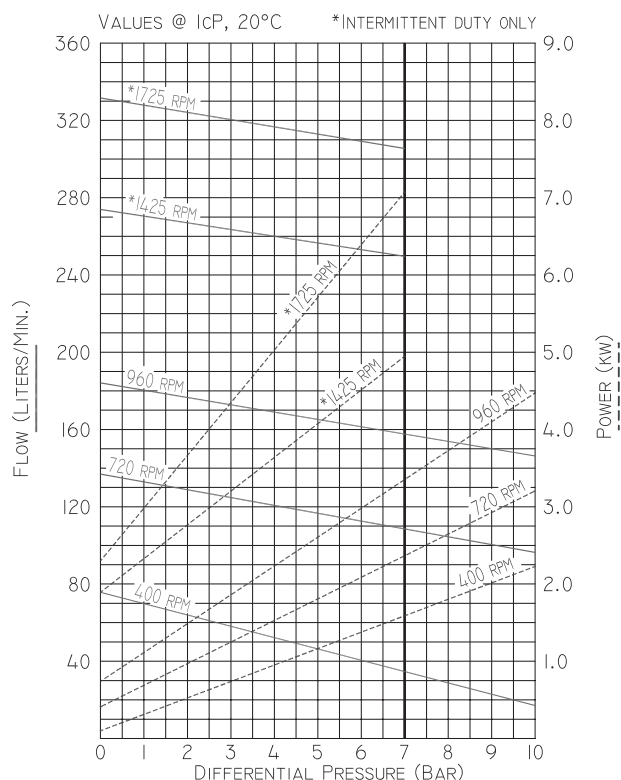
OBN13HDM with clutch

### Features

- 1-1/2" BSPT Ports
- Temp. Range: -40°C - 204°C
- All Bronze Castings and Stainless Steel Shafts
- Sealing Arrangement Interchangeable in Field with Proper Kit
- Outboard Ball Bearing Support for Belt Drive Applications
- Self Lubricating Carbon Bearings
- Please be advised that Oberdorfer has discontinued the supply of clutches. The clutch-ready configuration is available under model OBN13HDME-06

Model	Seal		Conversion Kit
	Type	Material	
OBN13HDP	Packing	Acrylic-Graphite	OB11021
OBN13HDLE	Lip	FKM-PTFE	OB11023
OBN13HDME	Mechanical	NBR-Ceramic	OB11025
OBN13HDLES3	Lip	NBR	OB11024
OBN13HDMES3	Mechanical	FKM-Ceramic	OB11026
OBN13HDMES8	Mechanical	EPDM	TBD

### Performance



### Service Wear Factors

**Speed** - High speed accelerates wear. For longer service life keep speed as low as possible. Pump speeds above 900 RPM not recommended except for intermittent duty and pressures below 7 bar.

**Pressure** - High pressure accelerates wear. For longer service life keep pressure as low as possible.

**Liquid Temperature** - High temperature accelerates wear. Keep as close to room temperature as possible.

**Liquid Contamination** - Impurities like fine abrasive silt or sand accelerate wear. Keep liquid as clean as possible.

**Liquid Lubricity** - Lubricants increase service life many fold. Use lubricant additives whenever possible.

**Noise** - Large gear pumps are inherently noisy due to metal to metal gear contact. Make installations far removed from offices or other relatively quiet people areas. Some noise reduction can be realized by lowering pump speed and use of isolation mounts and lines, usually the small amount of noise reduction achieved does not justify the effort and expense.



**OBERDORFER**<sup>®</sup>

An Ingersoll Rand Business

## Service Wear Factors (contd.)

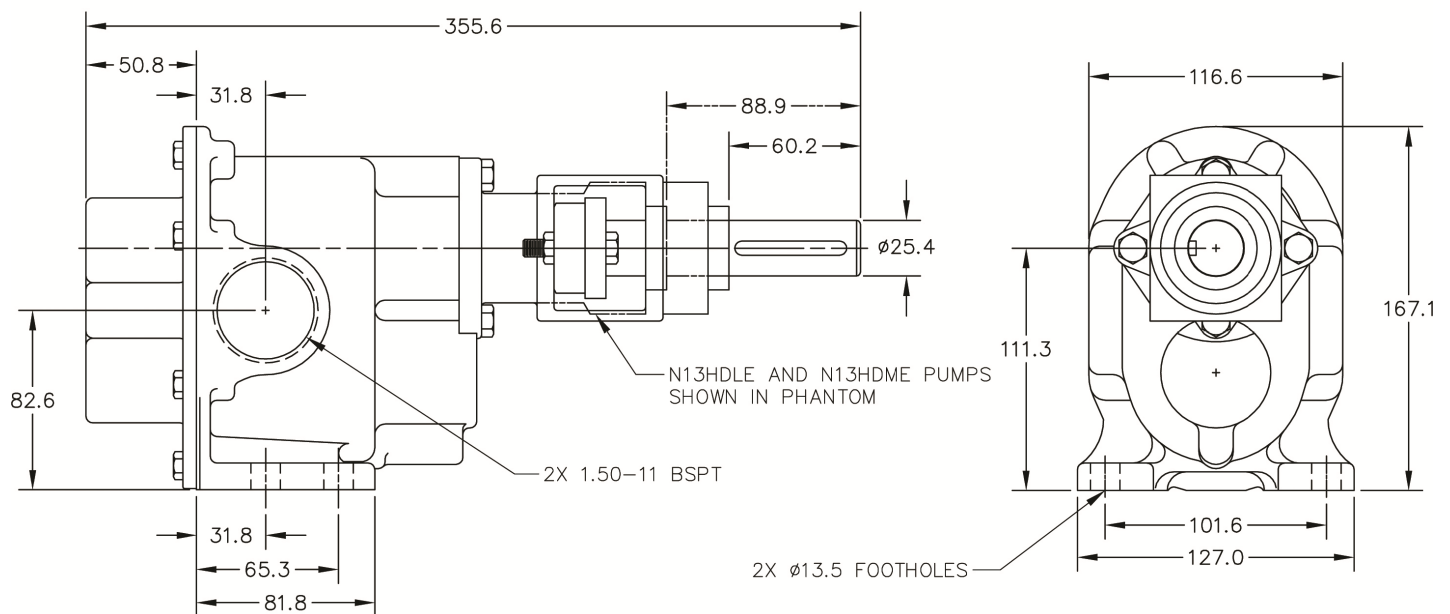
**Drive & Alignment** - Direct drive is the recommended drive arrangement. This pump is suitable for belt drive applications without needing pillow block bearings to achieve acceptable pump life. Correct alignment is absolutely essential for satisfactory pump life. Recheck alignment after piping has been connected to the pump. Electric clutch versions available.

## Seal Conversion Kits

Seal conversion kits illustrated (on back) are designed for quick removal and replacement. In each case, seal housings are fastened to pump bodies by means of 2 bolts, item 13.

**IMPORTANT:** Before attempting to remove a seal housing containing seal components by sliding them off the pump shaft, be sure to unlock 2 set screws locking the ball bearing inner race to the pump shaft. The ball bearing is identified as item 20. Also, before attempting to slide the seal housing from the pump shaft, remove all burrs, scale, and projections that could be formed by fretting corrosion.

## Dimensions



## Clutch Drive Options

Model	Clutch Drive Options	Clutch Coil	Clutch Assembly	Pump Repair Kit	7	17
					Drive Shaft	Seal Housing
					Qty. 1	Qty. 1
OBN13HDME-E12	Gear Pump, Mechanical Seal with 12V Clutch	OB7224	OB32238	OB12029	OB9168-1	OB9169-1
OBN13HDME-E24	Gear Pump, Mechanical Seal with 24V Clutch	OB9902	OB33066		OB9168-1	OB9169-1
OBN13HDME-E32	Gear Pump, Mechanical Seal with 32V Clutch	OB7225	OB32239		OB9168-1	OB9169-1



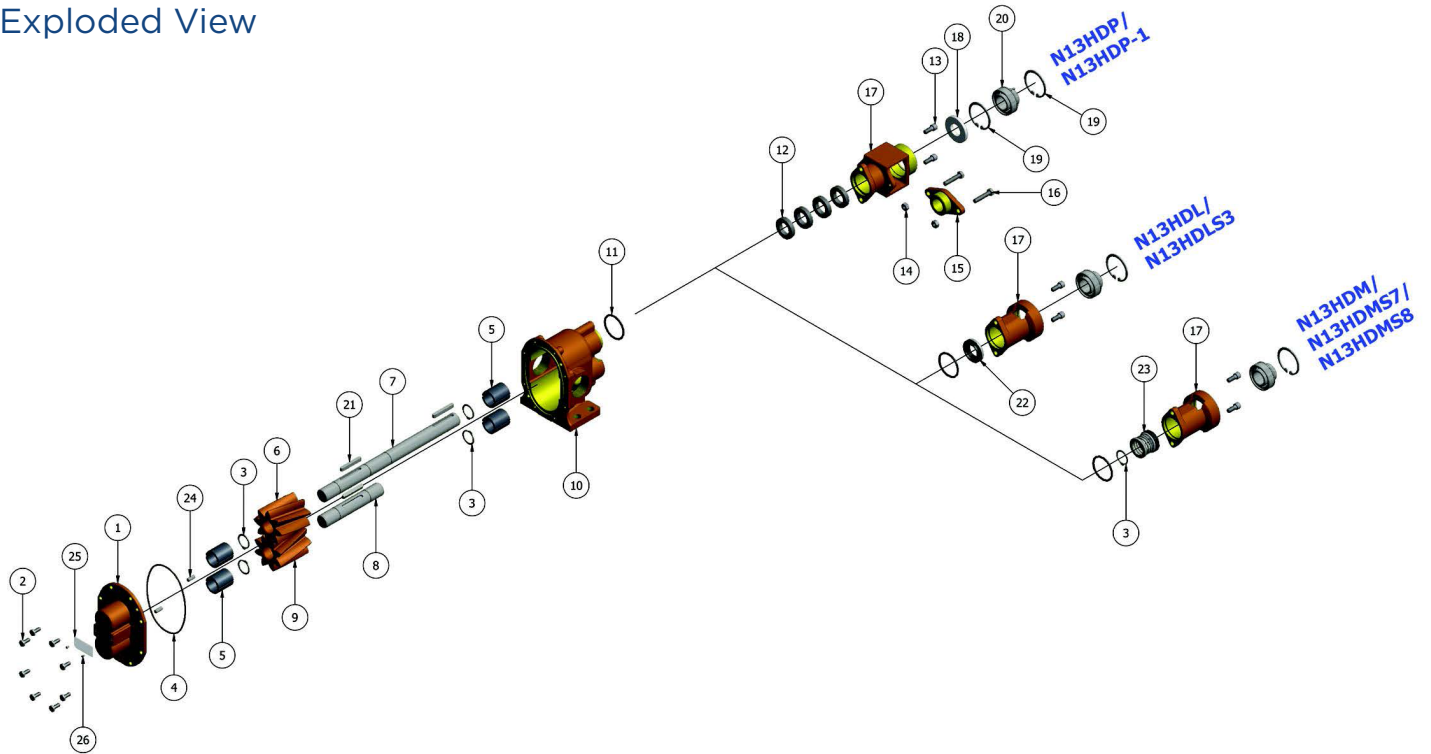
12500 South Pulaski Road  
Alsip, IL 60803, USA  
Phone (800) 448.1668



# OBERDORFER®

An Ingersoll Rand Business

## Exploded View



	1	2	3	4	5	6	7	8	9	10	11	12	13
	Cover	Screw	Snap Ring	O-Ring	Bearing	Drive Gear	Drive Shaft	Idle Shaft	Idle Gear	Body	O-Ring	Packing Ring	Screw
Model	Qty. 1	Qty.8	Qty.4/5	Qty. 1	Qty. 4	Qty. 1	Qty. 1	Qty. 1	Qty. 1	Qty. 1	Qty. 1	Qty. 4	Qty. 2
OBN13HDPE	OB9333NN5N	OB5393	OB7651 (4 Req'd)	OB9797-158	OB5108	OB9854	OB7570	OB7653	OB9855	OB9332NH7N	OB6515	OB7624	OB6827
OBN13HDLE	OB9333NN5N	OB5393	OB7651 (4 Req'd)	OB9797-158	OB5108	OB9854	OB7570	OB7653	OB9855	OB9332NH7N	OB9797-224	N/A	OB6827
OBN13HDLES3	OB9333NN5N	OB5393	OB7651 (4 Req'd)	OB9797-158	OB5108	OB9854	OB7570	OB7653	OB9855	OB9332NH7N	OB6515	N/A	OB6827
OBN13HDME	OB9333NN5N	OB5393	OB7651 (5 Req'd)	OB9797-158	OB5108	OB9854	OB7570	OB7653	OB9855	OB9332NH7N	OB6515	N/A	OB6827
OBN13HDME-06													
OBN13HDMES7	OB9333NN5N	OB5393	OB7651 (5 Req'd)	OB9797-158	OB5108	OB9854	OB7570	OB7653	OB9855	OB9332NH7N	OB9797-224	N/A	OB6827
OBN13HDMES8	OB9333NN5N	OB5393	OB7651 (5 Req'd)	OB9999-158	OB5108	OB9854	OB7570	OB7653	OB9855	OB9332NH7N	OB6515	N/A	OB6827

	14	15	16	17	18	19	20	21	22	23	24	25	26	Repair Kit
	Nut	Gland	Screw	Seal Housing	Lip Seal	Snap Ring	Ball Bearing	Key	Lip Seal	Seal Assy	Dowel Pin	Tag	Tag Screw	
Model	Qty. 2	Qty. 1	Qty. 2	Qty. 1	Qty. 1	Qty. 1/2	Qty. 1	Qty. 3	Qty. 1	Qty. 1	Qty. 2	Qty. 1	Qty. 2	
OBN13HDPE	OB8395	OB7451	OB9905	OB7449	OB6710	OB7372 (2 Req'd)	OB7368	OB6518	N/A	N/A	OB8597	OB9344	OB9345	OB11009
OBN13HDLE	N/A	N/A	N/A	OB7365	N/A	OB7372 (1 Req'd)	OB7368	OB6518	OB7262	N/A	OB8597	OB9344	OB9345	OB11011
OBN13HDLES3	N/A	N/A	N/A	OB7365	N/A	OB7372 (1 Req'd)	OB7368	OB6518	OB6500	N/A	OB8597	OB9344	OB9345	OB11012
OBN13HDME	N/A	N/A	N/A	OB7365	N/A	OB7372 (1 Req'd)	OB7368	OB6518	N/A	OB32315	OB8597	OB9344	OB9345	OB11013
OBN13HDME-06														
OBN13HDMES7	N/A	N/A	N/A	OB7365	N/A	OB7372 (1 Req'd)	OB7368	OB6518	N/A	OB32372	OB8597	OB9344	OB9345	OB11014
OBN13HDMES8	N/A	N/A	N/A	OB7365	N/A	OB7372 (1 Req'd)	OB7368	OB6518	N/A	OB33335	OB8597	OB9344	OB9345	TBD

Repair kit contain items 3, 4, 5, 6, 7, 8, 9, 11, 12, 18, 22 & 23



12500 South Pulaski Road  
Alsip, IL 60803, USA  
Phone (800) 448.1668